

# Responsible Services

Innovative Pest Management Division

www.responsibleservices.com

(513)737-7783 | (513)469-7738 | (513)398-4120

*"How do I get prepared for my bedbug treatment?"*

## **The Bedbug:** *(It helps to know your enemy)*

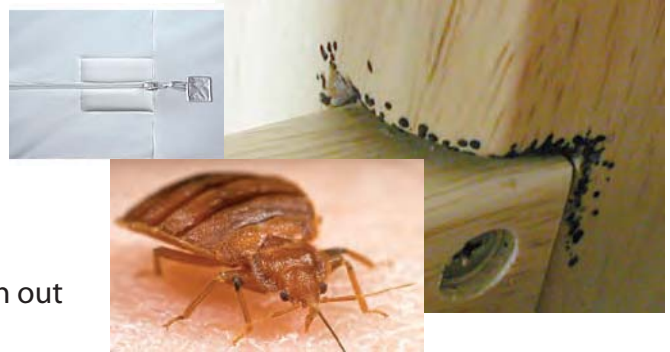
1. **Adult** bed bugs are dark reddish brown insects that are flattened, wingless with bands of hairs.

2. **Size:** They are roughly a 1/4" long when fully grown and about the size of an apple seed. Immature nymphs (babies) are very small and translucent at when they hatch out and roughly the size of a ball point pen tip. (Tiny)

3. **Where they like to live:** Bedbugs particularly like wood and fabric. They hide in cracks, crevices, narrow spaces and voids in proximity to where humans sleep or rest such as: beds and bed frames, night stands, dressers, desks, recliners and sofas.

**Heavier infestations** spread behind baseboards, in windows and door casings. Look for them behind items attached to walls and ceilings, pictures, electrical switch plates, smoke detectors, loose wallpaper, in the pleats of drapes, and the upholstery of furniture.

4. **What are the Black Spots?** That is digested blood that they are excreting it dries black and is a sign of infestation. If you found it on your mattress you might want to remove it and check your box springs it is common to find more activity at this level.



## **Your Preparation Before Treatment:** (Do you know how the bed bugs were introduced into your home?)

1. Remove clutter off floors and away from walls.
2. Launder bed linens, bedspread, etc. Leave bed unmade.
3. Fabric items that are appropriate for washers and Dryers should be placed in dryer on Medium high to high heat for 20 minutes. (It needs to reach 120 degrees for 10 minutes to work properly)
4. Remove ALL items from drawers (night stands, dressers, desk etc..). All drawers must be treated.
5. Remove switch plates from outlets and switches
6. Remove any items that are mounted to the walls (i.e. Pictures, mirrors, but leave them in the room.)
7. VACUUM THOROUGHLY! (Every other day)
8. Purchase protective encasements for mattress and box spring.  
(We offer a discounted rate on Protect-a-bed terry cloth top premium encasements with the bug lock zipper and seal)

## **What can I do after the treatment?**

1. Open as many windows as possible (weather permitting)
2. Leave your home for 4 hours or until the spray has dried. Keep pets and children off treated surfaces until the spray has dried.
3. DO NOT CLEAN FLOORS FOR 2-3 WEEKS! (i.e. Steamclean carpets or wash surfaces)
4. Carpeted areas can be vacuumed.
5. Install mattress covers on mattress and box spring (bedbug prevention specific)  
(We will install your encasements if you purchase the Protect-a-bed brand through Responsible Services)

**Expectations:** You can expect immediate if not complete reduction in activity. Due to the nature of the bug some of them may be hiding in a crack or crevice missed on the initial intensive treatment of the room. Don't be alarmed contact the office for questions and remember this is a proven process and we will eliminate the infestation provided all the steps are followed. Multi-family Structures can cause difficulties with treatment based upon levels of cooperation between units.